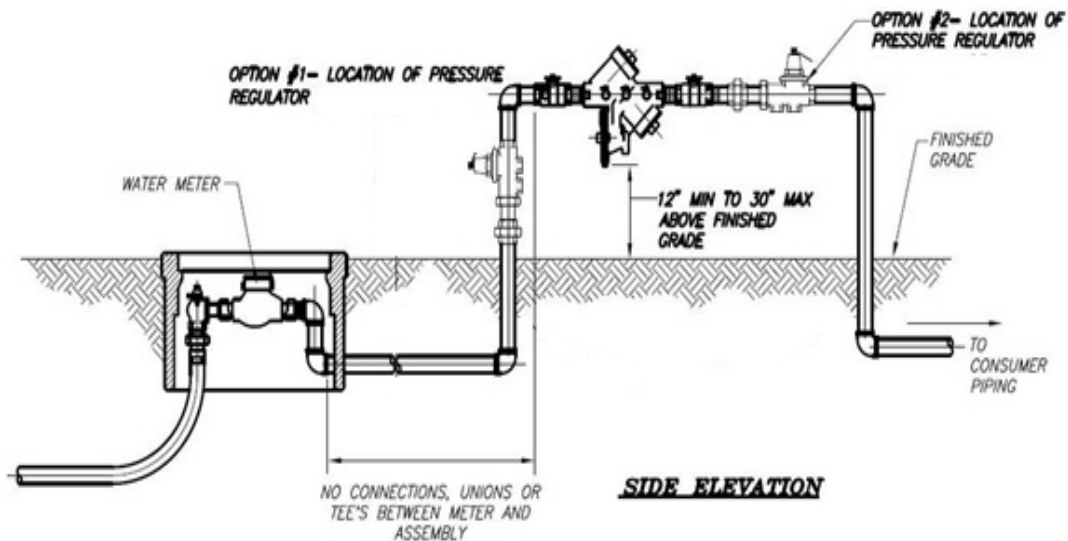


Irrigation Backflow Preventer Requirements



- (A) Backflow prevention shall be a reduced pressure assembly type with the model being approved by the Tennessee Department of Environment & Conservation Division of Water Supply
- (B) Backflow prevention assemblies shall have approved shutoff valves.
- (C) Backflow prevention assemblies shall be installed in a manner so testing and repairs can be performed. Clearances of a minimum of 12" on non-testing side, 36" on testing side from objects including but not limited to shrubbery, electric transformers, phone and cable pedestals. Assemblies must be installed at a minimum height of 12" above finished grade.
- (D) Backflow prevention assemblies shall not have any type of electric control valve installed between main water supply line and backflow prevention assemblies.
- (E) Backflow prevention assemblies shall be installed in a horizontal position, unless approved for vertical installation.
- (F) There shall not be any bypass in plumbing system around backflow prevention assemblies, unless protected by it's own backflow prevention assembly.
- (G) Backflow prevention assemblies of all sizes shall be installed with test cocks and ¼" flared test fittings for testing.
- (H) Backflow prevention assemblies for irrigation systems shall be installed at a distance no greater than 5' from First Utility District's water meter, within the utility easement or road right of way.